



Southern New England Chapter of PMI

Making Southern New England better through Project Management™

Chapter Meeting - Wednesday, February 15th

REINVENT, REINVIGORATE and RECONNECT

Network and Learn about SNEC Initiatives and Benefits, PMI/Region, Sponsors, and Volunteers Needs for 2012

Crowne Plaza Hotel, Cromwell, CT - Essex Room

Agenda

- 5:00 - 6:00pm - Registration and Networking
- 5:30 - 6:30pm - PMI Global / Region 3 and SNEC Overview
- 6:30 - 7:30pm - Portfolio Presentations & Sponsor Recognition
- 7:30 - 8:30pm - Facilitated Networking Session

Cost:

\$15 for SNEC Members
\$25 for Non-SNEC Members

PDUs:

Earn up to 3 PDUs!

Food:

Appetizers and Carving Station

PM for this event: Judy.Borrmann@sneccpmi.org

Registration: Deadline is Sunday February 12th at midnight.

Overview

Come and join your fellow project management professionals for a special chapter meeting - **reinvent**, **reinvigorate** and **reconnect** with the project management community!

The February 15th chapter meeting provides a *low cost* PDU opportunity for new and existing members to learn about the Chapter strategy, Core Initiatives for 2012, Special Events and Program offerings.

This is your opportunity to network and interact with fellow project management professionals, chapter committee members,

portfolio leads and the BOD. During this meeting we will introduce and recognize chapter sponsors who have provided invaluable support and demonstrate continued commitment to our chapter programs and services and learn how to “speed network”

Bring your business cards and/or resumes, and take away fresh contact with the region’s project management profession!

Meeting Agenda Details:

- PMI Global/Region 3 - Norm Prevost
- SNEC Mission/Vision and Strategic Intent/Voice of the Membership - Carin Salonia
- Portfolio Key Initiatives - BOD Member
- Value of Membership - BOD Member
- Volunteer Opportunities - Darwyn Azzinaro
- Sponsor Recognition - Lynn Van Sweden
- Speed Networking - Meeting Participants Exercise

It’s not too late to purchase a Season Pass for 2012 Hartford area chapter meetings. SNEC members [registering](#) for the [February meeting](#) can choose this cost-saving option for meetings through December 2012!

TIME IS RUNNING OUT!
SNEC Annual PM Conference
Deadline to Register for Early Bird Discounted Rates and Corporate Discount Offers is **Wednesday, February 29th!**
See page 3 for details

In This Issue

- President’s Message 2
- SNEC Special Event - Dr. Jerry Brightman 2
- SNEC 7th Annual PM Conference and Workshops 3
- Spotlight on Leadership 4
- Meetings and Special Events . . . 5
- Special Event - Lee Lambert 6
- Volunteer Opportunities 7
- New Chapter Members & PMPs . . 8

MARK YOUR CALENDAR

- February 15th**
[SNEC Monthly Chapter Meeting - Cromwell](#)
Wednesday 5:00pm - 8:00pm
 - February 21st**
[Western Mass PM Forum Meeting - Springfield](#)
Tuesday 5:30pm - 7:30pm
 - March 8th**
[SNEC Women in Project Management - Hartford](#)
Thursday 4:30pm - 6:30pm
 - March 9th**
[Hartford Eastside PM Roundtable - Glastonbury](#)
Friday 7:30am - 9:00am
 - March 12th**
[Fairfield County \(Shelton\) March Meeting](#)
Monday 5:30pm - 8:00pm
 - March 13th**
[Western Mass PM Forum Meeting - Springfield](#)
Tuesday 5:30pm - 7:30pm
 - March 13th**
[Fairfield County \(Stamford\) March 2012 Meeting](#)
Tuesday 5:30pm - 8:00pm
 - March 21st**
[Sustainable Leadership: The 10 Most Important Leadership Skills for Successful Projects - Cromwell](#)
Wednesday 7:45am - 5:00pm
 - March 21st**
[SNEC Monthly Chapter Meeting - Cromwell](#)
Wednesday 5:30pm - 8:00pm
 - April 30 and May 1, 2012**
[SNEC Annual Professional Development Day](#)
The Passion and the Power of Project Management™
Full day Conference: Monday 8:00am - 5:00pm
Half day Workshops: Tuesday 8:00am - 12:00pm
Connecticut Convention Center, Hartford
- www.sneccpmi.org/events



President's Message

By Norm Prevost, PMP

It's 2012 or is it still 2011? Does it feel like the new year is just a continuation of the last year? Are you feeling challenged by what you are doing? Afraid you are doing the same thing over and over again? Need a new start,

a new idea, or to connect with old friends and make new ones? Well maybe it is time to reinvent, reinvigorate and reconnect. SNEC is here to help you do just that as we look to inform, re-train and help you become better at what you need to do; Learn new skills, strengthen partnerships and broaden your network.

What does Reinvent, Reinvigorate and Reconnect mean to you?

Reinvent, to remake or make over, to bring back. Are you happy where you are? Do you feel passionate about what you do? If not, it may be time to check out some of the training that we have coming up. Leadership training from Dr. Jerry Brightman, the return of Lee Lambert and of course our Professional Development Day that offers four half day seminars and multiple speakers. Ever consider giving back and speaking on a project management topic that you are passionate about? Let us know we are always looking for speakers.

Reinvigorate, is defined as fill with life and energy. How do we do that? At any of our many monthly meetings we provide ways to network with others. These connections will help you solve problems that you may be encountering. They may give you the opportunity to help someone else with their issue and if you have ever had the pleasure you know the feeling of pride and satisfaction that comes over you. Check out our February meeting in Cromwell with extended networking opportunities and a different format.

Reconnect, connect back together or reestablish a bond. Get involved with SNEC and your connections and network will explode. Show others your passion and the opportunities will grow and so will you. Join us this month and find out all we have to offer and what opportunities are available for you.

Let this year be your year to break out and reinvent, reinvigorate and renew your career and yourself. SNEC is there all the way to help. I hope to see you at this February's meeting in Cromwell. Questions, comments or concerns, say hi and tell me what's on your mind.

- Norm

DON'T MISS THIS SNEC-PMI SPECIAL EVENT

Sustainable Leadership: The 10 Most Important Leadership Skills for Successful Projects

by **Dr. Jerry Brightman**

President of The Leadership Group (TLG)

Date: Wednesday, March 21st, 2012, 7:45 AM to 5:00 PM. **Same date and location as the Chapter Meeting!**

Registration deadline: March 11th

Location: Crowne Plaza Hotel, Cromwell

Cost: \$279 for SNEC members; \$309 for Non-SNEC members. Cost includes breakfast, lunch and snacks.

PDU: 8

Dr. Jerry Brightman has 20 years experience in working with Project Managers globally and has discovered at least 10 key leadership skills and methodologies that link directly to project management success.

These include:

- Personal Mastery and Self-Awareness
- Creating a Shared Vision
- Challenging the Status Quo
- Creating Teams that Learn
- Thinking Systemically
- Balancing Inquiry and Advocacy
- Reconnecting to our "Lost" Creativity and Innovation
- Surfacing and Changing Mental Models
- Using IQ and EQ
- Influencing Without Authority

Attend this full day workshop, designed for those managers and leaders who are serious about reaching their full potential. This workshop will be followed by our March Chapter Meeting, where Dr. Brightman will also deliver the main presentation after dinner.

[Click here for details and registration](#)

The Passion and Power of Project Management™

The Southern New England Chapter of the Project Management Institute presents the **seventh annual PM Conference and Workshop – The Passion and Power of Power Management™** at the Connecticut Convention Center in Hartford, CT.

Take advantage of Early Bird Registration and Corporate Discount Offers by Wednesday, February 29th!

Full Day PM Conference

Monday, April 30, 2012 - 8:00AM to 6:00PM

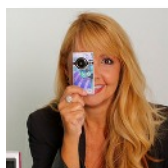
Choose presentations from two morning sessions and two afternoon sessions! This year's speakers bring thoughtful and relevant topics to our PM community; the importance of priorities in life and work and how to build trusting and high powered organizations with a commitment to excellence.

Keynote Speakers



Richard Sheridan

Agile, Lean, PMBOK and the Business Value of Joy



Gina Schreck

Using Today's Technology to Share Knowledge and Deliver BIG Value

Conference Features:

- Two Dynamic Key Note Speakers
- Multiple Morning Sessions
- Exhibit Hall
- Multiple Afternoon Sessions
- Cocktail Reception and Networking
- Earn a maximum of 7.0 PDUs toward PMI certifications
- Breakfast, lunch and break refreshments are included

Discounted Registration rate of \$50 for a single day and \$100 if registering for both days! Corporations registering and paying for ten or more people at the same time can get an additional 10% discount.

Half Day PM Workshops

Tuesday, May 1, 2012 - 8:00AM to 12:00PM

This is the morning following our popular all-day PM Conference. Choose from one of four exciting workshops for a more in-depth learning opportunity. You can attend a Workshop by itself or combine with the PM Conference to maximize your learning while minimizing your financial investment.

Workshop Speakers



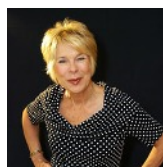
Bill Fournet

How to Stop Herding Cats: Leading Project Teams Through The Chaos



Luke Hohmann

Bridging the Gap: Linking Strategic Roadmaps to Tactical Project Plans



Halina St. James

Universal Strategies for Compelling Communication



Jason Tanner

What Happens to Project Managers When Organizations Adopt Agile

Workshop attendees earn 4.0 PDUs

More Information and Online Registration at:

<http://sneec-pmi.org/conference>

Questions? Contact us via email at:

conference@sneec-pmi.org

Register Early! Space is limited and all registration closes on March 23rd, 2012.

EVENT COSTS

Registrant Type	Both Days	Conf	Workshop
SNEC Member - <i>Early Bird</i>	\$400	\$250	\$200
Non-SNEC Member - <i>Early Bird</i>	\$520	\$310	\$260
SNEC Member - <i>after 2/29/12</i>	\$500	\$300	\$250
Non-SNEC Member - <i>after 2/29</i>	\$620	\$360	\$310

Early Bird Pricing in effect from January 1st through February 29th

Susan Parente is a project engineer, consultant, speaker, author, and mentor who leads large complex IT software implementation projects, and the establishment of Enterprise PMOs



Spotlight on Leadership - What To Do ...?

By Susan Parente, PMP, PMI-RMP, ITIL

I recently attended two meetings at different organizations. I found myself wishing, or wanting that the meeting leaders not demean the meeting attendees, not disparage themselves, not give orders to others, not to allow others to take the meeting slightly off topic or direction, not correct, not admonish people in front of others, and the list goes on. I often find that it is much easier in leadership and in many other areas, to notice what isn't working, than to distinguish what does work. Even when reading about leadership, we often learn what not to do. Why not approach this topic from the question of what to do?

Merriam-Webster defines leadership as 1) the office or position of a leader, 2) capacity to lead, 3) the act or an instance of leading. Which 'leads' us to the question, what is it to lead? One definition is: 1) to direct the operations, activity, or performance of, 2) to have charge of.¹ But what does this mean for leadership?

When we lead our project team, we are enrolling others in the objectives of the group. In order to do so, we start by understanding the objectives of our team. This comes from our project charter and any other organization policies and objectives. As the project manager, we lead our team via these common objectives. One alternative, yet effective method for leading uses the model of servant leadership. Let's consider what we could do through servant leadership.

Servant Leadership

Servant Leadership is focused on serving your team, rather than your team serving you. Out of serving one's team, a desire to lead is manifest. Servant Leadership is radically different than when the leader is leading first. When the focus is on leading first, it is very easy to use your power, your title (role in the hierarchy), or the fact that you were put in charge, as the basis of your actions. When we employ servant leadership, we support our team as a whole, and its individual members, in their growth and development. We ensure that their highest needs are being met through our support and service.² This may seem foreign; however consider those leaders you admire the most. What do they provide to you and your organization?

Let's change the conversation about leadership and initiate dialogue with our colleagues and leaders on how leaders support us well and what they could do to enhance their support, so we can be more effective team members and leaders ourselves.

In summary, concentrate on what you can do as a project manager to be a more effective leader for your team and how others can lead more effectively. Rather than focusing on what doesn't work, let's consider what does work and engage in conversations about effective leadership, not just with our team, but with those who lead us. As leaders, it is valuable for us to know what works well for our team members and equally valuable to share with our leaders - and our team - what works well for us. For more information on Servant Leadership, go to The Greenleaf Center for Servant Leadership at www.greenleaf.org.

© S3 Technologies, LLC 2012

¹ Merriam-Webster (An Encyclopedia Britannica Company), Definitions of Leadership and Lead. Retrieved from <http://www.merriam-webster.com>

² Greenleaf Center for Servant Leadership, What is Servant Leadership? Retrieved from <http://www.greenleaf.org/whatis/>

SNEC-PMI MEETINGS AND SPECIAL EVENTS

SNEC FEBRUARY CHAPTER MEETING

Special Chapter Meeting!

Wednesday, February 15th, 5:00pm - 8:00pm. up to 3 PDUs

Location: [Crowne Plaza Hotel](#), Cromwell, CT

Cost: \$15 for SNEC-PMI Members, \$25 for non-SNEC members

Registration closes Sunday, February 12th at Midnight.

Come and join your fellow project management professionals for a special chapter meeting - and low-cost PDU opportunity - dedicated to reinventing, reinvigorating and reconnecting with the project management community!

Explore our Chapter Strategy, Core Initiatives for 2012, Special Events and Program Offerings, and meet Chapter Sponsors who provide invaluable support and commitment to SNEC programs and services. Also included is a "learn how to speed network" session!

WESTERN MASS PROJECT MANAGEMENT FORUM

Tuesday, February 21st, 5:30pm - 7:30pm. 1.5 PDUs

Location: Western New England College, Springfield, MA

Topic: *Does Your Project have Full Leadership Support?* by Bridget Haley

Cost: \$12 for SNEC members; \$15 for non-SNEC members

Registration closes Sunday, February 19th at Midnight.

WOMEN IN PROJECT MANAGEMENT MARCH MEETING

Thursday - March 8th, 2011, 4:30pm - 6:30pm. 1 PDU

Location: The Hartford (Great Room, Floor 7)
55 Farmington Ave., Hartford, CT
Free parking directly across the street; sign in with Security.

Cost: \$10

Registration: Deadline - Sunday, March 4th, Midnight

Presentation: *Personal Branding* by Jeff Rock

Although initially a strategy for job searching, Personal Branding is now one of today's hottest tools, being widely used by large corporations who seek to get the best from their current and emerging leaders. Today, professionals need self-awareness and understanding of how to use strengths to deliver the greatest value to their organization.

HARTFORD EASTSIDE PROJECT MANAGEMENT ROUNDTABLE

Friday, March 9th, 7:30am to 9:00am. 1.0 PDU

Location: American Eagle Federal Credit Union Glastonbury Administration Center - Training Room A
20 Western Blvd
Glastonbury, CT 06033

Presentation: *Empathy in the Workplace* by Joe Brummer

FAIRFIELD COUNTY (SHELTON) DINNER MEETING

Monday, March 12th, 5:30pm - 8:00pm. 1.5 PDUs

Location: [Huntington Library](#), Barbara Clover Room,
41 Church St, Shelton, CT

Cost: \$12 for SNEC PMI Members, \$15 for non-SNEC members

Registration closes Sunday, March 11th at Midnight.

Presentation: *Introduction to Risk Assessment* by Stephen Fruchtman

The session is an introduction to a blended risk assessment methodology used across a wide spectrum of business types and operations. Coverage includes:

- What is risk?
- What are the major components of risk?
- What is a risk assessment methodology?
- Example of risk assessment methodology

**FULL-DAY SPECIAL EVENT:
Sustainable Leadership: The 10 Most Important Skills
 for Successful Projects by Dr. Jerry Brightman**

**Mark Your Calendars for this Special Event - Same Date
 & Location as the March Chapter Meeting!**

Wednesday, March 21st, 7:45am - 5:00pm. 8 PDUs

Location: [Crowne Plaza Hotel](#), Cromwell, CT

Cost: \$279 for SNEC-PMI Members, \$309 for non-SNEC members. Cost includes breakfast, lunch and snacks.

More details are available on [Page 2](#)

Registration closes Sunday, March 11th at Midnight.

SNEC MARCH CHAPTER MEETING

Wednesday, March 21st, 5:00pm - 8:00pm 1 to 1.5 PDUs

Location: [Crowne Plaza Hotel](#), Cromwell, CT

Cost: \$35 for SNEC-PMI Members, \$45 for non-SNEC members

Registration closes Sunday, March 18th at Midnight.

Main Presentation: *The Art of Sustainable Leadership* by Dr. Jerry Brightman

**FAIRFIELD COUNTY (STAMFORD)
 DINNER MEETING**

Tuesday, April 17th, 5:30pm - 8:00pm. 1.5 PDUs

Location: [Synapse Group, Inc.](#), Stamford, CT

5:30 - 6:30pm - Registration and Networking

6:00 - 6:30pm - Pizza Dinner

6:30 - 8:00pm - Main Presentation

Topic: *Social Business Project Management* by Phebe Ong Arouni, PMP

Cost: \$12 for SNEC PMI Members, \$15 for non-SNEC members

Registration closes Sunday, April 15th at Midnight.

**SNEC-PMI 2012 PROJECT MANAGEMENT
 CONFERENCE AND WORKSHOPS**

**Full-day PM Conference - Monday, April 30th
 Half-day Workshops on Tuesday, May 1st**

Please join us this spring for our 7th annual SNEC Project Management Conference & Workshops.

Location: The Connecticut Convention Center in Hartford

Early Bird Discounts End February 29th - [Register Now](#) for the Lowest Rates!

See [page 3](#) for details...

**SNEC Full-Day Special Event: Inspirational
 Leadership & Communication in a Project Delivery
 Driven Environment by Lee Lambert, PMP**

Wednesday, September 19th. 8 PDUs

7:45am - 8:30am - Registration, Breakfast and Networking

8:30am - 4:00pm - Event

Location: [Crowne Plaza Hotel](#), Cromwell, CT

Cost: \$289 for SNEC-PMI Members, \$319 for non-SNEC members. Cost includes breakfast, lunch, snacks and beverages.

Registration closes Sunday, September 16th at Midnight.

Course Information: You can't afford to miss this learning opportunity. Decision Support Information is one of a Project Management Professional's most valuable products; communicating that information effectively is THE most vital responsibility. In a project delivery driven environment this task can be daunting. Faced with unrealistic budget/time constraints, organizational political uncertainty, ambiguity of expectations, human factors (paradigms) and relentless "don't confuse me with facts" stakeholders the Project Management Professional must rise above the "noise" and deliver. Attending this powerful workshop will show you how to easily utilize simple tools and techniques to communicate "truth" and influence outcomes, while inspiring team members (loaned and owned) to new heights of performance.

Continued on page 7

Continued from "Lee Lambert", page 6

LEARNING OBJECTIVES:

Following completion of this program the student should be able to:

- Understand the Critical LINK between PM and Leadership/Followership
- Effectively Identify and Communicate with ALL Project Stakeholders
- Encode Communication "Messages" to Increase Level of Effectiveness
- Select the Appropriate Method of "Sending" Messages
- Secure Feedback from Receiver to assure Clarity and Comprehension
- Understand His/Her Leadership Style and Needs of the "Followers"
- Utilize Motivational Relationship Awareness to Maximize Performance
- Prepare a Positive Interaction Strategy with Individual Followers
- Recognize and Resolve Conflict in a non-Confrontational way
- Capitalize on the Productivity Impacts of Empowerment
- Create a "Lessons Learned" Leadership Log for Continuous Improvement

Speaker Background Information

Lee Lambert takes the saying; "been there, done that, got the T-shirt" to new heights in project management training, by incorporating a pragmatic perspective and a unique use of personal analogies to help bring the subject matter to life. No other Project Management educator can contend with his uncanny technical knowledge, material content and refreshing delivery - not to mention his humorous, engaging, CommonSense™ style that has mesmerized more than 40,000 students in 21 countries. Lee has been an honored and distinguished member of the project management community since 1968 and was part of the original team that formulated and implemented the PMP Certification Program. He is recognized as one of the most effective project management educators in the world.

If you have any questions, please contact:

Abby Bosacker, PMP, at 860-558-635 5(cell) or via email at: Abby.Bosacker@sneec-pmi.org.

VOLUNTEER OPPORTUNITIES

Call for VP of Programs - We Want YOU!

Help run our monthly chapter meetings!

Join the team of volunteers who make the events run smoothly. Are you a good PM? Are you organized and work well with others? Would you like to help coordinate our speakers and set the direction of our chapter? We are looking for a leader for our **VP of Programs!**

Volunteer today! Contact our Volunteer Committee at: volunteer@sneec-pmi.org and we will get you started.

Are you a seasoned Project Manager who would like to get more involved with SNEC?

Do you need more PDUs? Do you have some spare hours a week to volunteer? Good news ... we are in need of new volunteers for our Special Events programs. As a PM of this program, you will interview for possible presenters, arrange event logistics, PM & attend the event and earn PDUs!

Volunteers help SNEC-PMI add value to its members and to the community. This is an important job with lots of opportunity to network with some of the best project managers in the area - the SNEC-PMI volunteers!

If you would like to join us, please take a look at our current list of opportunities on our [website](#) and/or contact us at volunteer@sneec-pmi.org.

To See the Complete and Current Listing of Volunteer Openings, please visit:

www.sneec-pmi.org/volunteers

NEW SNEC-PMI CHAPTER MEMBERS

as of December 31, 2011

Vasundhara Bhupathi	Sarah Kubler
Marc Bono	Stephanie Labbe
Emily Bostrom	Peter Lockwood
Scott Bradley	Thomas Logan
Elizabeth Browne	Frank Marra
Jason Cabral	Patrice Maturo
George Calzat	Delcy Newell
Hosik Choi	Alan Olenick
Gabriel Cidri	Michel Plouffe
Jonathan Cobb	John Prete
Alan Colwell	Kyran Ritchens
Jerry Fan	Flavie Sanon
Steven Finegan	Daniel Tirpack
Sharan Finik	John Troiano
Christopher Fritz	Faith Vicinanza
Paul Haughton	Nathan White
Pamela Hemingway	Robert Wolfe
Drew Ingenito	Robert Young
Brian Kelly	Michael Zelasky

SNEC-PMI PMP UPDATE

Congratulations from our Board of Directors and our Membership to the newest PMPs in our chapter:

Jane Bennett

James Bertini

Blair Bradley

Jeffrey Francis

Michel Plouffe

Geoff Thomas

**DID YOU
KNOW**

If your PMI membership is coming due and you are job hunting, remember the PMI Hardship Waiver

A Hardship Provision is available to any PMI member whose financial condition has changed drastically and sufficiently so that a member would have difficulty renewing their membership. A member must be in good standing for at least three previous years to qualify for the hardship provision. Under the provision, a member is granted a waiver for one year of PMI Membership dues and one year of dues for membership in any two PMI Components of which the applicant was a member the previous year. The Hardship provision may be granted for a maximum of two years for each member.

You must apply prior to your expiration date. For full details, visit our [website](#)

SNEC Member Articles are In Demand!

If you are an SNEC member, and have written or want to write a good PM 'tips and techniques' article, PM book review(s), or insights of practical PM value, we are building a bank of member-authored material for possible publication.

Sharing your knowledge will enhance the value of our monthly newsletter - and give you a byline plus PDUs! Under category 25DL, contributors can claim one PDU per each hour spent in study/research up to a maximum of 15 PDUs.

Please contact editor@sneec-pmi.org and let us have a sample of your submission! We will get back to you to discuss your submission.

SNEC-PMI 2011-2012 BOARD OF DIRECTORS

Norm Prevost, PMP
President and CEO

Norm.Prevost@sneec-pmi.org

Carin Salonia, PMP
Vice President and COO
Carin.Salonia@sneec-pmi.org

Fred Johnson, PMP
Treasurer and CFO
Fred.Johnson@sneec-pmi.org

Sarah Schneiderman, PMP
Corporate Secretary
Sarah.Schneiderman@sneec-pmi.org

Darwyn Azzinaro, PMP
Past President

Darwyn.Azzinaro@sneec-pmi.org

Kevin Riley, PMP
Operations and Administration
Kevin.Riley@sneec-pmi.org

Judy Borrmann, PMP
Professional Development
Judy.Borrmann@sneec-pmi.org

Svetlana Veprinsky
Education
Svetlana.Veprinsky@sneec-pmi.org

Lynn Van Sweden, PMP
Conference

Lynn.Van.Sweden@sneec-pmi.org

Susan Parente, PMP, PMI-RMP
Marketing
Susan.Parente@sneec-pmi.org

Anthony Falsetta, PMP
Membership
Anthony.Falsetta@sneec-pmi.org

Michael Okrent, PMP
Membership
Michael.Okrent@sneec-pmi.org

SNEC-PMI QUICK MEMBER FACTS

As of December 2011 there are
1,747 members and **1,238**
PMPs in our Chapter!

QUICK LINKS

[Get Involved](#)

[Events Calendar](#)

[Register for Events](#)

[FAQS](#)

[Newsletter Archive](#)

[Contact Us](#)



If you were forwarded or downloaded our newsletter and would like to receive your own copy every month, just click [here](#) or on the graphic above to subscribe!

Seeking your PM Tips, Techniques or Experiences!

The SNEC-PMI Newsletter aims to reflect our outstanding membership.

Please feel free to submit a tip, technique, or experience that you have found particularly helpful as a project manager. Submit your tip (50-250 words) to our editor at content@sneec-pmi.org.

All tips are subject to change at the discretion of the editor.