



Southern New England Chapter of PMI

Making Southern New England better through Project Management™

Chapter Meeting - Wednesday, January 18th *Beyond the Certification*

Crowne Plaza Hotel, Cromwell,
CT - Essex Room

Agenda

- 5:00 - 6:00pm - Registration and Networking
- 5:30 - 6:00pm - Pre-Meeting Session
- 6:00 - 7:00pm - Business Meeting and Dinner
- 7:00 - 8:00pm - Main Presentation

PM for this event: Judy.Borrmann@sneccpmi.org

Registration: Deadline is Sunday January 15th at midnight.

Pre-Meeting Education Session

Transformational Project Management: The intersection between Servant Leadership and Project Management
by Jeff Harmon, PMP

The project management community, while recognizing that leadership can contribute to successful project management, has stopped short of specifically identifying leadership as the way forward for ensuring successful project results. “Transformational Project Management” is a reflective presentation on Jeff’s personal leadership experiences in project management during his 16 years in the field, the practices of servant leadership that most influenced his project leadership style and the implications to the field of project management if servant leadership would be widely accepted and practiced by the project management community.

Biography: Jeff Harmon, PMP, Associate Certified Coach (ACC) - International Coach Federation, is an innovative, results-driven professional with over 16 years of experience building relationships to enable organizations to successfully execute full lifecycle enterprise technology and process improvement projects and programs for global deployment.

Harmon has maintained a passion for unconditionally supporting individuals and helping them to achieve their personal best through shared work, which led him to transition to coaching part-time in 2007 and full-time in 2011. Harmon is owner/principal coach for Brilliance Within Coaching, LLC, a full-service business, personal and executive coaching company, and holds a BS degree in finance from the University of Central Florida.

Main Presentation

Beyond the Certification by Wayne Botha, PMP

Are you PMP® certified and still dissatisfied with the success rate of your projects? Have you ever wondered what it takes to be a successful IT project manager in the real world?

Get insightful answers in this session delivered by Wayne Botha, who will present the results of in-depth interviews with over thirty seasoned program and project managers. Learn from experiences that can be utilized in your professional journey to become an increasingly successful Project Manager.

Biography: Wayne is a certified Project Management Professional (PMP®) and a seasoned IT project manager for an insurance company. Since 1986 Wayne has helped IT professionals in South Africa, Saudi Arabia, Holland and the USA.

Wayne holds a BA in Information Systems/Psychology and an MBA in e-Business. Wayne has facilitated at Axia college, and develops project managers through multiple channels including his website, newsletter, blog, books and personal coaching. Wayne has held leadership positions as Director of Marketing for SNEC-PMI and Area Governor for Toastmasters International.

In This Issue

- President’s Message 2
- SNEC Special Event - Dr. Jerry Brightman - March 2012 2
- SNEC 7th Annual PM Conference and Workshops 3
- Hartford Eastside Roundtable Upcoming Events 4
- Meetings and Special Events . . . 5
- Volunteer Opportunities 7
- New Chapter Members and PMPs 8

MARK YOUR CALENDAR

- January 18th**
[SNEC Monthly Chapter Meeting - Cromwell](#)
Wednesday 5:30pm - 8:00pm
 - February 3rd**
[Fairfield County \(Shelton\) PM Roundtable Breakfast Meeting](#)
Friday 7:30am - 9:00am
 - February 10th**
[Hartford Eastside PM Roundtable](#)
Friday 7:30am - 9:00am
 - February 15th**
[SNEC Monthly Chapter Meeting - Cromwell](#)
Wednesday 5:30pm - 8:00pm
 - February 21st**
[Western Mass PM Forum Meeting - Springfield](#)
Tuesday 5:30pm - 7:30pm
 - March 21, 2012**
[Sustainable Leadership: The 10 Most Important Leadership Skills for Successful Projects](#) - Cromwell
Wednesday 7:45am - 5:00pm
 - March 21st**
[SNEC Monthly Chapter Meeting - Cromwell](#)
Wednesday 5:30pm - 8:00pm
 - April 30 and May 1, 2012**
[SNEC Annual Professional Development Day](#)
The Passion and the Power of Project Management™
Full day Conference: Monday 8:00am - 5:00pm
Half day Workshops: Tuesday 8:00am - 12:00pm
Connecticut Convention Center, Hartford
- www.sneccpmi.org/events



President's Message

By Norm Prevost, PMP

Welcome to 2012! I hope you were able to spend time with your family over the holiday season and enjoy some time off to rest and reflect. Speaking of reflection, how was your 2011? If you were out of work, were you able to find something?

If yes, do you have any "tricks" to share?

We are always on the lookout for new content for our job assistance area at www.snec-pmi.org. If you find yourself still looking, remember that members can [sign up](#) for job alerts on our web site. Our job alert emails only go out to those who have signed up to receive them. Those who have already signed up may have noticed the uptick in activity recently.

If one of your New Year's resolutions is to "sharpen your saw" aka self-improvement, we are here to help. In March we are bringing back Dr. Jerry Brightman to speak about *Sustainable Leadership: The 10 Most Important Leadership Skills for Successful Projects*. Registration is now [open](#).

April 30th and May 1st will be our 7th annual [PM Conference](#) with a full-day slate of seminars, followed by a half day of four seminars - you have the option of attending one of these four three-hour sessions. Registration is open now so check out details and your attendance options on our [website](#). Looking forward to September we are featuring a full-day workshop led by long-time favorite and PMI fellow Lee Lambert, on *Inspirational Leadership & Communication in a Project Delivery Driven Environment*. And don't forget to take advantage of our monthly meetings and smaller area meetings that offer a chance to network and hear an interesting speaker.

Make plans to come to our February Chapter Meeting! We are changing the format and pricing to give you more insight into your chapter, our Region 3 within PMI, and PMI Global. All our portfolios will be represented to highlight what they do and plan for 2012. We will also talk about all the volunteer opportunities that are available in 2012. Should you find yourself unemployed, volunteering is a great way to keep your skills sharp, network, and maintain an active, impressive resume. So reserve Wednesday February 15th for SNEC!

I can't say it enough - we have a number of exciting volunteer opportunities - earn PDU's, give back to your professional community and update your resume with your involvement. If you have any questions, comments or just want to say hi, look for me at the Cromwell meetings, special events or drop me an email at norm.prevost@snec-pmi.org. All the best for 2012!

- Norm

Plan to Attend SNEC's 2012 Monthly Chapter Meetings in Cromwell at a Discounted Rate – Register for the Wednesday January 18th Meeting and [Purchase your Season Pass!](#)

SNEC members choosing this option will receive admission to the nine 2012 meetings (January through November) for the cost of seven meetings (\$245.00). For more information, contact programs@snec-pmi.org

MARK YOUR CALENDARS FOR THIS 2012 SNEC SPECIAL EVENT

Sustainable Leadership: The 10 Most Important Leadership Skills for Successful Projects

by Dr. Jerry Brightman

President of The Leadership Group (TLG)

Date: Wednesday, March 21st, 2012, 7:45 AM to 5:00 PM.
Same date and location as the Chapter Meeting!

Location: Crowne Plaza Hotel, Cromwell

Cost: \$279 for SNEC members; \$309 for Non-SNEC members. Cost includes breakfast, lunch and snacks.

PDU's: 8

We know what leadership is, and when asked will most likely give a correct answer. However, the answer is rarely complete, given the breadth and depth of what leadership is all about. Dr. Jerry Brightman has 20 years experience in working with Project Managers globally and has discovered at least 10 key leadership skills and methodologies that link directly to project management success.

These include:

- Personal Mastery and Self-Awareness
- Creating a Shared Vision
- Challenging the Status Quo
- Creating Teams that Learn
- Thinking Systemically
- Balancing Inquiry and Advocacy
- Reconnecting to our "Lost" Creativity and Innovation
- Surfacing and Changing Mental Models
- Using IQ and EQ
- Influencing Without Authority

Attend this full day workshop, designed for those managers and leaders who are serious about reaching their full potential. This workshop will be followed by our March Chapter Meeting, where Dr. Brightman will also deliver the main presentation after dinner.

[Click here for details and registration.](#)

The Passion and Power of Project Management™ – Early Bird Registration is Open!

The Southern New England Chapter of the Project Management Institute presents the **seventh annual PM Conference and Workshop – The Passion and Power of Project Management™** at the Connecticut Convention Center in Hartford, CT.

Early Bird discounted rate offer is available through Wednesday, February 29th.

Full Day PM Conference

Monday, April 30, 2012 - 8:00AM to 6:00PM

Choose presentations from two morning sessions and two afternoon sessions! This year's speakers bring thoughtful and relevant topics to our PM community; the importance of priorities in life and work and how to build trusting and high powered organizations with a commitment to excellence.

Keynote Speakers



Richard Sheridan

Agile, Lean, PMBOK and the Business Value of Joy



Gina Schreck

Using Today's Technology to Share Knowledge and Deliver BIG Value

Conference Features:

- Two Dynamic Key Note Speakers
- Multiple Morning Sessions
- Exhibit Hall
- Multiple Afternoon Sessions
- Cocktail Reception and Networking
- Earn a maximum of 7.0 PDUs toward PMI certifications
- Breakfast, lunch and break refreshments are included

SNEC-PMI Annual Conferences have attracted up to 800 project management practitioners from Connecticut and surrounding areas.

Half Day PM Workshops

Tuesday, May 1, 2012 - 8:00AM to 12:00PM

This is the morning following our popular all-day PM Conference. Choose from one of four exciting workshops for a more in-depth learning opportunity. You can attend a Workshop by itself or combine with the PM Conference to maximize your learning while minimizing your financial investment.

Workshop Speakers



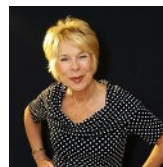
Bill Fournet

How to Stop Herding Cats: Leading Project Teams Through The Chaos



Luke Hohmann

Bridging the Gap: Linking Strategic Roadmaps to Tactical Project Plans



Halina St. James

Universal Strategies for Compelling Communication



Jason Tanner

What Happens to Project Managers When Organizations Adopt Agile

Workshop attendees earn 4.0 PDUs

More Information and Online Registration at:

<http://sneec-pmi.org/conference>

Questions? Contact us via email at:

conference@sneec-pmi.org

Register Early! Space is limited and all registration closes on March 23rd, 2012.

EVENT COSTS

Registrant Type	Both Days	Conf	Workshop
SNEC Member - <i>Early Bird</i>	\$400	\$250	\$200
Non-SNEC Member - <i>Early Bird</i>	\$520	\$310	\$260
SNEC Member - <i>after 2/29/12</i>	\$500	\$300	\$250
Non-SNEC Member - <i>after 2/29</i>	\$620	\$360	\$310

Early Bird Pricing in effect from January 1st through February 29th

Outreach is Back!

For those of you anxiously awaiting the return of the Outreach Committee... we are back and we need your help! Want to be the PM for the "Professional Development Day In-A-Box"? Or PM the "PMI Best of the Best in Project Management Professional Awards"? How about helping with grants and scholarships with the PMI Educational Foundation? Or giving back to the PMI community with Non-Profit local training?

Please contact the Volunteer Committee to let us know you are interested: volunteer@sneec-pmi.org

Upcoming Events at the Hartford Eastside PM Roundtable

What are you doing first thing, every second Friday of the month? You *could* be earning PDUs, increasing your PM knowledge, and networking with your peers.

Here's a look at what's happening February through May at the Hartford Eastside Project Management Roundtable:

February 10, 2012: Jeffrey T. Schultz, Senior Principal Technical Specialist, Parsons Brinckerhoff, Inc., Glastonbury will discuss the 62-mile *New Haven-Hartford-Springfield rail corridor* (NHHS). This presentation will focus on the how the project team is working through the challenges and opportunities in the program in order to ensure that NHHS service begins by 2016 and the program goals are achieved as rail passenger services are restored and expanded on this historic rail corridor.

March 9, 2012: Joe Brummer, Associate Executive Director, Community Mediation, Inc., will discuss *Empathy in the Workplace* and the importance of empathy as a leadership skill.

April 13, 2012: Eric J. Snyder, CISSP, OPST, SnortCP, Q/EP at American Eagle Federal Credit Union will discuss *Computing Security*. Eric facilitated the September 2011 roundtable on *Social Networking* and found that people wanted to know more about computing security. If you are one of these people, plan to attend this roundtable!

May 11, 2012: By popular demand, Seamus Gahan will present on *Influencing Without Authority*. Seamus is a Project Manager at MassMutual Financial Group. He spoke at both a monthly Cromwell chapter meeting and at the Western Massachusetts Project Management Forum on this topic, resulting in strong approval ratings.

Location: American Eagle Federal Credit Union, Administration Center, 20 Western Blvd, Glastonbury, CT

What's a "Roundtable?"

A roundtable is a meeting where Project Managers discuss issues that they face on a daily basis, beginning with introductions and solicitations for topics. The topics for discussion are determined by multi-voting; each attendee gets to vote for two topics. Anyone attending may address the topic.

Why should I go?

These meetings are worth 1 PDU - valuable, and free. This is a great way to meet other project managers in a less formal setting and talk about is forefront in your mind. Attendees represent a mix of junior and senior Project Managers from a variety of disciplines, providing an eclectic view of a subject.

If you plan on attending, or are interested in presenting, please contact Sarah Schneiderman at (860) 568-2020 ext. 5447 or sarah.s@aefcu.com by 4 p.m. on Thursday, January 12, 2012. Pre-registration is not required.

SNEC-PMI MEETINGS AND SPECIAL EVENTS

SNEC JANUARY CHAPTER MEETING

Wednesday, January 18th, 5:00pm - 8:00pm 1 to 1.5 PDU's

Location: [Crowne Plaza Hotel](#), Cromwell, CT

Cost: \$35 for SNEC-PMI Members, \$45 for non-SNEC members

Registration closes Sunday, January 15th at Midnight.

Pre-Meeting Education Session: *Transformational Project Management: The intersection between Servant Leadership and Project Management* by Jeff Harmon, PMP

Main Presentation: *Beyond the Certification* by Wayne Botha, PMP

FAIRFIELD COUNTY (SHELTON) BREAKFAST ROUNDTABLE MONTHLY MEETING

Monday, February 3rd, 7:30am to 9:00am. 1.0 PDU

Location: [Enterprise Deli](#), One Corporate Dr, Shelton, CT

Cost: Free. You can buy coffee or breakfast at the Deli.

Registration closes Thursday, February 2nd at Midnight.

Presentation: *The Methodology, Advantages, and Challenges of Managing Virtual Project Teams and Clients* by Barbara Cavuoto MSM, PMP

HARTFORD EASTSIDE PROJECT MANAGEMENT ROUNDTABLE

Friday, February 10th, 7:30am to 9:00am. 1.0 PDU

Location: American Eagle Federal Credit Union Glastonbury Administration Center - Training Room A
20 Western Blvd
Glastonbury, CT 06033

Presentation: *Managing the Revival of the New Haven-Hartford-Springfield Rail Corridor (NHHS)* by Jeffrey T. Schultz, PMP

SNEC FEBRUARY CHAPTER MEETING

SPECIAL CHAPTER MEETING

Wednesday, February 15th, 5:00pm - 8:00pm. 2.0 PDU's

Location: [Crowne Plaza Hotel](#), Cromwell, CT

Cost: \$15 for SNEC-PMI Members, \$25 for non-SNEC members

Registration closes Sunday, February 12th at Midnight.

The February chapter meeting will provide a *low cost PDU* opportunity for new and existing members to learn about the Chapter Strategy, Core Initiatives for 2012, Special Events and Program Offerings.

This is your opportunity to network; interact with fellow project management professionals, chapter committee members, portfolio leads and the BOD. During this meeting we will introduce and recognize chapter sponsors who have provided invaluable support and demonstrate continued commitment to our chapter programs and services and learn how to "speed network".

Meeting Agenda Details:

- PMI Global/Region 3 - Norm Prevost
- SNEC Mission/Vision and Strategic Intent/Voice of the Membership - Carin Salonia
- Portfolio Key Initiatives - BOD Member
- Value of Membership - BOD Member
- Volunteer Opportunities - Darwyn Azzinaro
- Sponsor Recognition - Lynn Van Sweden
- Speed Networking - Meeting Participants Exercise

FAIRFIELD COUNTY (SHELTON) MARCH MEETING

Monday, March 12th, 5:30pm - 8:00pm. 1.5 PDU's

Location: [Huntington Library](#), Barbara Clover Room, 41 Church St, Shelton, CT

Cost: \$12 for SNEC PMI Members, \$15 for non-SNEC members

Registration closes Sunday, March 11th at Midnight.

Presentation: *Introduction to Risk Assessment* by Stephen Fruchtmann

FULL-DAY SPECIAL EVENT:
Sustainable Leadership: The 10 Most Important Skills for Successful Projects by Dr. Jerry Brightman

Mark Your Calendars for this Special Event - Same Date & Location as the March Chapter Meeting!

Wednesday, March 21st, 7:45am - 5:00pm. 8 PDUs

Location: [Crowne Plaza Hotel](#), Cromwell, CT

Cost: \$279 for SNEC-PMI Members, \$309 for non-SNEC members. Cost includes breakfast, lunch and snacks.

More details are available on [Page 2](#)

Registration closes Sunday, March 11th at Midnight.

SNEC MARCH CHAPTER MEETING

Wednesday, March 21st, 5:00pm - 8:00pm 1 to 1.5 PDUs

Location: [Crowne Plaza Hotel](#), Cromwell, CT

Cost: \$35 for SNEC-PMI Members, \$45 for non-SNEC members

Registration closes Sunday, March 18th at Midnight.

Main Presentation: *The Art of Sustainable Leadership* by Dr. Jerry Brightman

FAIRFIELD COUNTY (STAMFORD) DINNER MEETING

Tuesday, April 17th, 5:30pm - 8:00pm. 1.5 PDUs

Location: [Synapse Group, Inc.](#), Stamford, CT

5:30 - 6:30pm - Registration and Networking

6:00 - 6:30pm - Pizza Dinner

6:30 - 8:00pm - Main Presentation

Topic: *Social Business Project Management* by Phebe Ong Arouni, PMP

Project teams today face increasing pressure to perform, while they at the same time face significant obstacles to that performance. Attend this meeting to hear about how Social Business Project Management goes far beyond Project Management by recognizing that project teams are only part of

the project community, and that a broader project community exists.

Cost: \$12 for SNEC PMI Members, \$15 for non-SNEC members

Registration closes Sunday, April 15th at Midnight.

SNEC Full-Day Special Event: Inspirational Leadership & Communication in a Project Delivery Driven Environment by Lee Lambert, PMP

Wednesday, September 19th. 8 PDUs

7:45am - 8:30am - Registration, Breakfast and Networking

8:30am - 4:00pm - Event

Location: [Crowne Plaza Hotel](#), Cromwell, CT

Cost: \$289 for SNEC-PMI Members, \$319 for non-SNEC members. Cost includes breakfast, lunch, snacks and beverages.

Registration closes Sunday, September 16th at Midnight.

Course Information: You can't afford to miss this learning opportunity. Decision Support Information is one of a Project Management Professional's most valuable products; communicating that information effectively is THE most vital responsibility. In a project delivery driven environment this task can be daunting. Faced with unrealistic budget/time constraints, organizational political uncertainty, ambiguity of expectations, human factors (paradigms) and relentless "don't confuse me with facts" stakeholders the Project Management Professional must rise above the "noise" and deliver. Attending this powerful workshop will show you how to easily utilize simple tools and techniques to communicate "truth" and influence outcomes, while inspiring team members (loaned and owned) to new heights of performance.

LEARNING OBJECTIVES:

Following completion of this program the student should be able to:

- Understand the Critical LINK between PM and Leadership/Followership
- Effectively Identify and Communicate with ALL Project Stakeholders
- Encode Communication "Messages" to Increase Level of Effectiveness
- Select the Appropriate Method of "Sending" Messages

Continued on page 7

Continued from "Lee Lambert", page 6

- Secure Feedback from Receiver to assure Clarity and Comprehension
- Understand His/Her Leadership Style and Needs of the "Followers"
- Utilize Motivational Relationship Awareness to Maximize Performance
- Prepare a Positive Interaction Strategy with Individual Followers
- Recognize and Resolve Conflict in a non-Confrontational way
- Capitalize on the Productivity Impacts of Empowerment
- Create a "Lessons Learned" Leadership Log for Continuous Improvement

Speaker Background Information

Lee Lambert takes the saying; "been there, done that, got the T-shirt" to new heights in project management training, by incorporating a pragmatic perspective and a unique use of personal analogies to help bring the subject matter to life. No other Project Management educator can contend with his uncanny technical knowledge, material content and refreshing delivery - not to mention his humorous, engaging, CommonSense™ style that has mesmerized more than 40,000 students in 21 countries. Lee has been an honored and distinguished member of the project management community since 1968 and was part of the original team that formulated and implemented the PMP Certification Program. He is recognized as one of the most effective project management educators in the world.

If you have any questions, please contact:

Abby Bosacker, PMP, at 860-558-635 5(cell) or via email at: Abby.Bosacker@sneec-pmi.org.

VOLUNTEER OPPORTUNITIES

Outreach Volunteers Needed

The SNEC Outreach Committee is bursting at the seams with interesting and exciting opportunities to extend and promote the benefits of project management throughout the business, educational and non-profit communities.

Below are some of our project opportunities where you can be of help! Please contact Outreach VP - Steve Teebagy at steve.teebagy@sneec-pmi.org to learn more.

- PM for Project Management "Professional Development Day-in-a-Box" Project
- PM for "SNEC-PMI Professional Awards" Program
- Education Outreach Steering Committee Members
- Non-Profit Outreach Steering Committee Members

Call for VP of Programs - We Want YOU!

Help run our monthly chapter meetings!

Join the team of volunteers who make the events run smoothly. Are you a good PM? Are you organized and work well with others? Would you like to help coordinate our speakers and set the direction of our chapter? We are looking for a leader for our **VP of Programs!**

Volunteer today! Contact our Volunteer Committee at: volunteer@sneec-pmi.org and we will get you started.

Are you a seasoned Project Manager who would like to get more involved with SNEC?

Do you need more PDUs? Do you have some spare hours a week to volunteer? Good news ... we are in need of new volunteers for our Special Events programs. As a PM of this program, you will interview for possible presenters, arrange event logistics, PM & attend the event and earn PDUs!

Volunteers help SNEC-PMI add value to its members and to the community. This is an important job with lots of opportunity to network with some of the best project managers in the area - the SNEC-PMI volunteers!

If you would like to join us, please take a look at our current list of opportunities on our [website](#) and/or contact us at volunteer@sneec-pmi.org.

To See the Complete and Current Listing of Volunteer Openings, please visit:

www.sneec-pmi.org/volunteers

NEW SNEC-PMI CHAPTER MEMBERS

as of November 31, 2011

Laurie Augeri	Beth Park
Jane Bennett	Chandralall Persaud
Glen Boucher	Darius Peyton
David Burque	Jan Purdy
Richard Chang	Carrie Riera
Jeanne Dankowski	Joan Ross
Dennis Desmarais	Lori Rumley
Adolphus Gayle	Bernard Saroglou
Lyly Ha	Darlene Scarola
Daniel Holle	Mark Sievel
Ellen Kramer	Grace Turano
Nancy Kramer	Mamode Ufomata
Sohrab Lonbani	Sweta Vallejo
Adam Noelte	

SNEC-PMI PMP UPDATE

Congratulations from our Board of Directors and our Membership to the newest PMPs in our chapter:

Briana Alexander
Valerie Moore
Matthew Priest
Darlene Scarola
Mamode Ufomata

**DID YOU
KNOW**



If your PMI membership is coming due and you are job hunting, remember the PMI Hardship Waiver

A Hardship Provision is available to any PMI member whose financial condition has changed drastically and sufficiently so that a member would have difficulty renewing their membership. A member must be in good standing for at least three previous years to qualify for the hardship provision. Under the provision, a member is granted a waiver for one year of PMI Membership dues and one year of dues for membership in any two PMI Components of which the applicant was a member the previous year. The Hardship provision may be granted for a maximum of two years for each member.

You must apply prior to your expiration date. For full details, visit our [website](#)



SNEC-PMI 2011-2012 BOARD OF DIRECTORS

Norm Prevost, PMP
President and CEO
Norm.Prevost@sneec-pmi.org

Kevin Riley, PMP
Operations and Administration
Kevin.Riley@sneec-pmi.org

Roy Bullivant, PMP
Marketing
Roy.Bullivant@sneec-pmi.org

Carin Salonia, PMP
Vice President and COO
Carin.Salonia@sneec-pmi.org

Judy Borrmann, PMP
Professional Development
Judy.Borrmann@sneec-pmi.org

Anthony Falsetta, PMP
Membership
Anthony.Falsetta@sneec-pmi.org

Fred Johnson, PMP
Treasurer and CFO
Fred.Johnson@sneec-pmi.org

Svetlana Veprinsky
Education
Svetlana.Veprinsky@sneec-pmi.org

Michael Okrent, PMP
Membership
Michael.Okrent@sneec-pmi.org

Sarah Schneiderman, PMP
Corporate Secretary
Sarah.Schneiderman@sneec-pmi.org

Lynn Van Sweden, PMP
Conference
Lynn.Van.Sweden@sneec-pmi.org

Darwyn Azzinaro, PMP
Past President
Darwyn.Azzinaro@sneec-pmi.org

Susan Parente, PMP, PMI-RMP
Marketing
Susan.Parente@sneec-pmi.org

**SNEC-PMI
 QUICK MEMBER
 FACTS**

As of November 2011 there are
1,729 members and **1,235**
 PMPs in our Chapter!

QUICK LINKS

[Get Involved](#)

[Events Calendar](#)

[Register for Events](#)

[FAQS](#)

[Newsletter Archive](#)

[Contact Us](#)



If you were forwarded or downloaded our newsletter and would like to receive your own copy every month, just click [here](#) or on the graphic above to subscribe!

Seeking your PM Tips, Techniques or Experiences!

The SNEC-PMI Newsletter aims to reflect our outstanding membership.

Please feel free to submit a tip, technique, or experience that you have found particularly helpful as a project manager. Submit your tip (50-250 words) to our editor at content@sneec-pmi.org.

All tips are subject to change at the discretion of the editor.